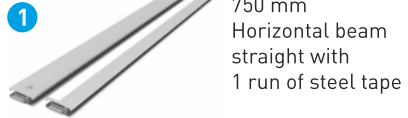


COMPONENT & ACCESSORIES

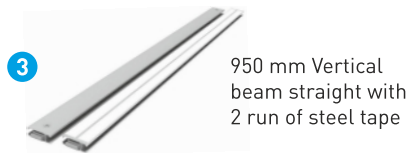
2



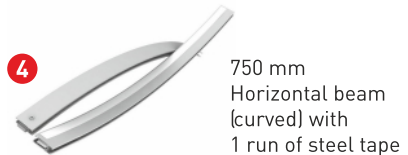
1 750 mm Horizontal beam straight with 1 run of steel tape



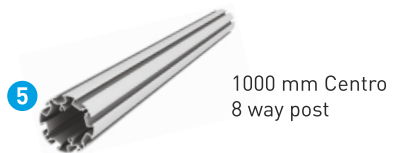
2 950 mm Vertical beam straight with 1 run of steel tape



3 950 mm Vertical beam straight with 2 run of steel tape



4 750 mm Horizontal beam (curved) with 1 run of steel tape



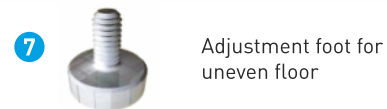
5 1000 mm Centro 8 way post



9 200 mm connector bar with 4 grub screws and a thread hole to accommodate adjustable foot



6 Centro base



7 Adjustment foot for uneven floor



8 200 mm connector bar with 4 grub screws



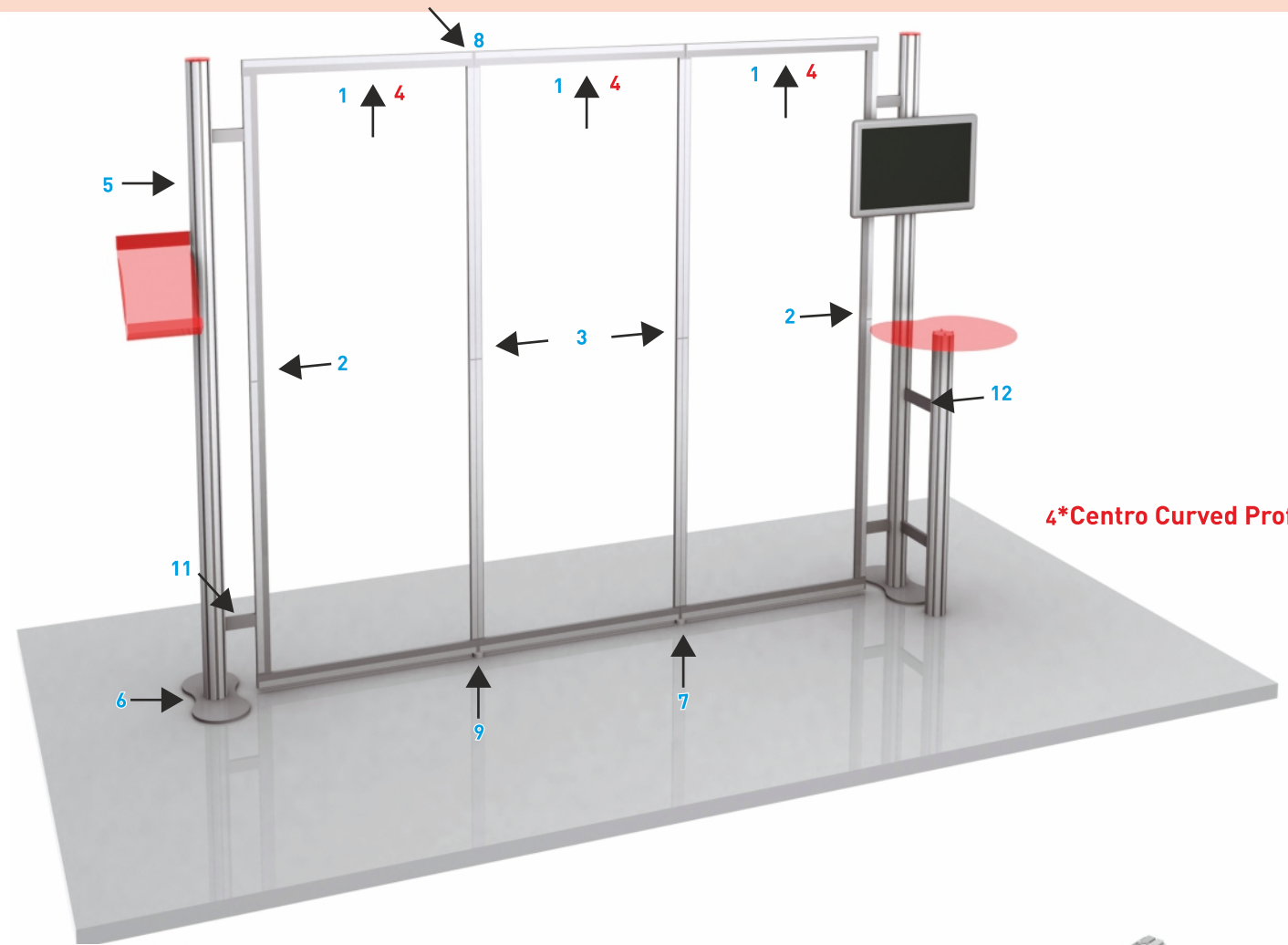
10 Expanding clamp



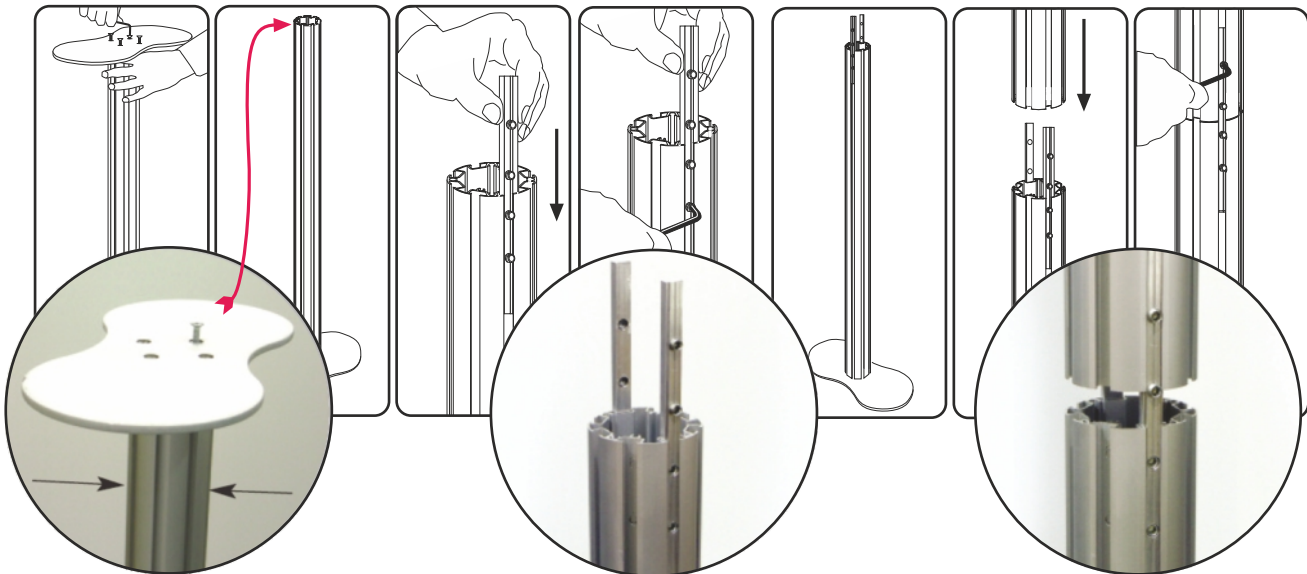
11 Spacer bar 110 mm including 2 expanding clamps



12 Spacer bar 220 mm including 2 expanding clamps



4*Centro Curved Profiles



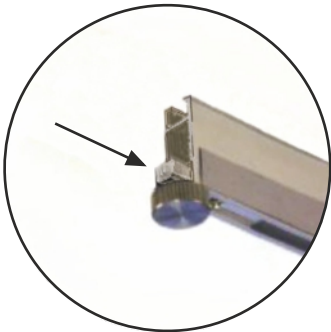
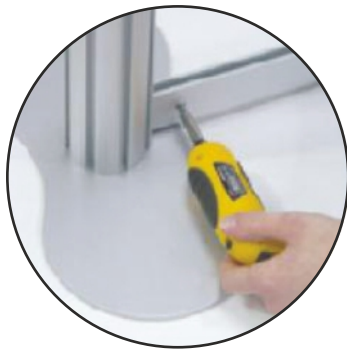
Attach base plate to lower column. Grooves containing connector bars should be at 90° to base plate

Stand base on the ground. Loosen and slide connector bars half way out of groove and retighten.

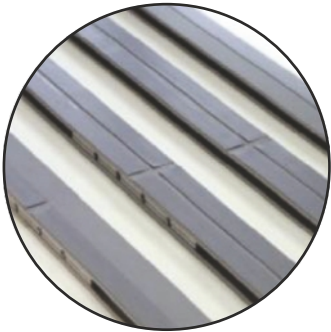
Join posts and tighten the grub screws to make assembly secure. Repeat for other base post.

The adjustable feet should be screwed into the horizontal 750 mm rails used at the bottom of the system. Note position of tape.

The side and middle* straight vertical 950 mm graphic rails should now be assembled. Note position of tape strips.



Connect the bottom horizontal rail to the two posts and tighten grub screws as before. Leave top rail until all verticals are in place. They will balance.



Connect side vertical rails to the bottom horizontal rail. The side vertical rails have one run of tape on them. Tape should be nearest to the post when viewed from the front.



Slot top horizontal rail onto all vertical rails and tighten grub screws.